

A-TYPE

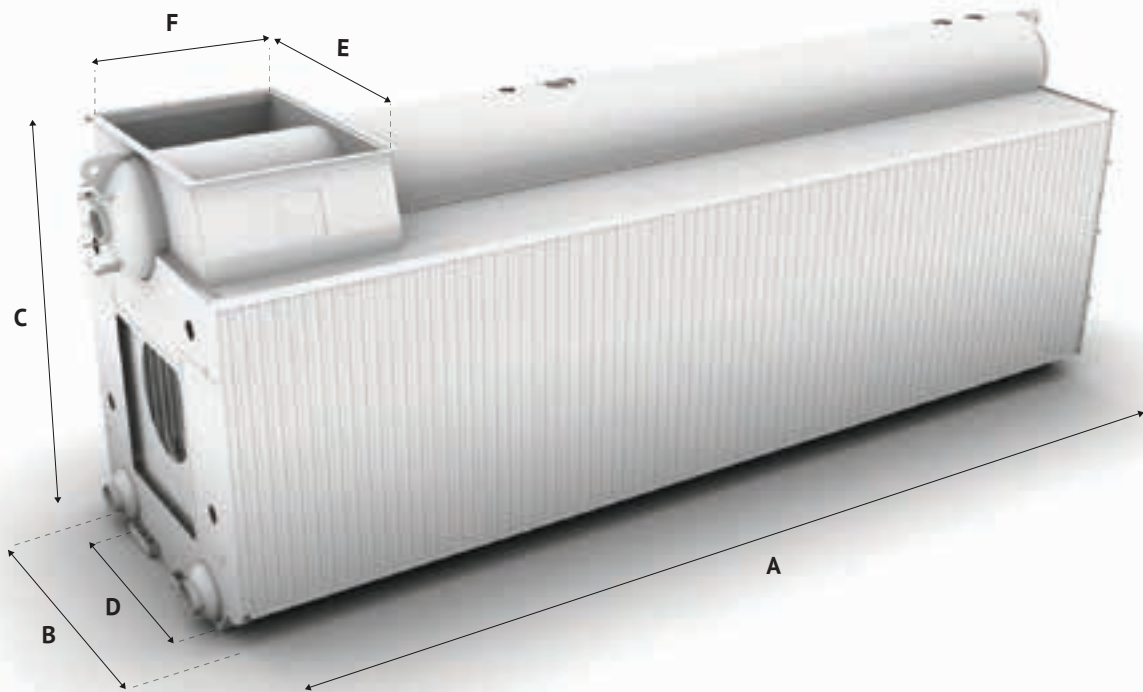
WATERTUBE STEAM BOILER
UP TO 250,000 PPH (HIGHER CAPACITY ON DEMAND)



© Groupe Simoneau Inc. 2018. All rights reserved.

REQUEST INFORMATION
T : 1 800 748 3783 / 450-641-9140
WWW.GROUPESIMONEAU.COM

PHYSICAL DATA SHEET



Boiler Model Number	Capacity PPH	A Base Length	B Width	C Height	D Base Width	Gas Outlet		WEIGHTS (in Pounds)	
						E Width	F Length	Dry	Flooded
A1-20	20,000	14'-9"	11'-1"	12'-6"	8'-7"	7'-0"	2'-0"	65,000	80,000
A1-30	30,000	17'-9"	11'-1"	12'-6"	8'-7"	7'-0"	2'-0"	70,000	90,000
A1-40	40,000	20'-0"	11'-1"	12'-6"	8'-7"	7'-0"	2'-0"	75,000	100,000
A1-50	50,000	22'-5"	11'-1"	12'-6"	8'-7"	7'-0"	2'-0"	85,000	110,000
A2-60	60,000	23'-1"	12'-5"	13'-10"	9'-5"	7'-10"	2'-8"	95,000	130,000
A2-70	70,000	24'-9"	12'-5"	13'-10"	9'-5"	7'-10"	2'-8"	100,000	135,000
A2-80	80,000	26'-0"	12'-5"	13'-10"	9'-5"	7'-10"	2'-8"	105,000	145,000
A2-90	90,000	27'-9"	12'-5"	13'-10"	9'-5"	7'-10"	3'-0"	110,000	150,000
A3-100	100,000	33'-0"	12'-9"	15'-6"	9'-5"	7'-10"	4'-0"	130,000	175,000
A3-110	110,000	34'-9"	12'-9"	15'-6"	9'-5"	7'-10"	4'-0"	135,000	180,000
A3-125	125,000	37'-9"	12'-9"	15'-6"	9'-5"	7'-10"	4'-4"	145,000	195,000
A3-150	150,000	41'-0"	12'-0"	15'-6"	9'-5"	7'-10"	4'-4"	150,000	210,000
A4-175	175,000	42'-5"	12'-11"	16'-8"	9'-7"	7'-10"	6'-0"	165,000	240,000
A4-200	200,000	44'-5"	12'-11"	16'-8"	9'-7"	7'-10"	6'-0"	175,000	250,000
A4-250	250,000	49'-9"	12'-11"	16'-8"	9'-7"	7'-10"	6'-0"	190,000	275,000

WELL BALANCED CONSTRUCTION FOR MAXIMUM INDUSTRIAL CAPACITY

The A-Type watertube steam boiler, with centered steam drum and two lower mud drums, offers a symmetrical and well balanced design. This configuration generates increased performance to 250,000 PPH. Optional open bottom furnace is well suited for solid fuel firing.



**SYMMETRICAL
CONFIGURATION**



**EXTENSIVE
CAPACITY RANGE**



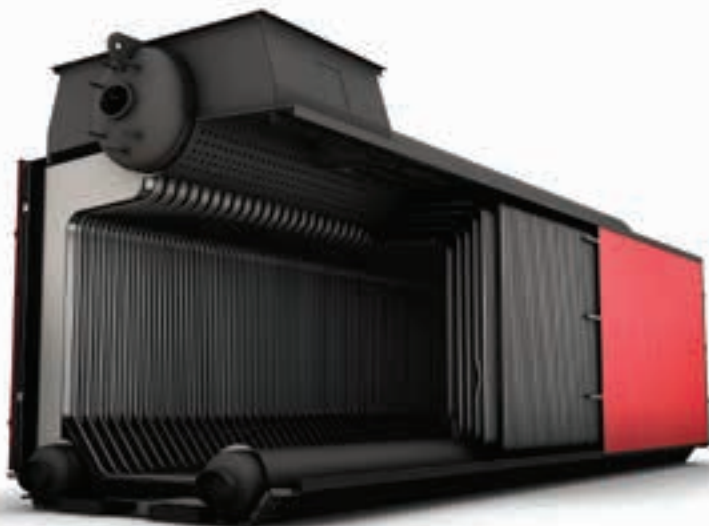
**SUPERIOR
STEAM QUALITY**



**CUSTOMIZABLE
CONSTRUCTION**

ADVANTAGES

- Radiant type superheaters with temperatures up to 1000 °F
- Reliable source of high quality, dry saturated steam (up to 99.9%)
- Superior steam purity (1 ppm) using appropriate separation technology
- Extensive capacity range
- Symmetrical design with natural circulation
- Gas tight membrane waterwall
- Boiler system components for maximum control of operation
- Ease shipping capabilities by road or train with well balanced weight distribution
- Indoor or outdoor installations
- Excellent long-term reliability to meet industrial and utility applications
- Open-bottom furnace fitting a variety of combustion systems



COMBUSTION / CONTROL

**LARGE SELECTION OF ADAPTABLE
COMBUSTION SYSTEMS**

**MEETS OR EXCEEDS NO_x
EMISSION STANDARDS**

**FUEL CHOICE
FLEXIBILITY**

**FULL RANGE /
CHOICE OF CONTROLS**

A-TYPE WATERTUBE STEAM BOILER NOW AVAILABLE

Stay in the loop. Get product updates by visiting www.groupe-simoneau.com



SIMONEAU

POWER TO GROW